



For Sale
Rural Estate Lot
 9.73 Acres

Horrell Hill and Fox Meadow Roads

Hopkins, South Carolina
 29061

For more information

Tombo Milliken

O: 803 744 9852 | C: 803 206 8384
 tombo.milliken@naicolumbia.com

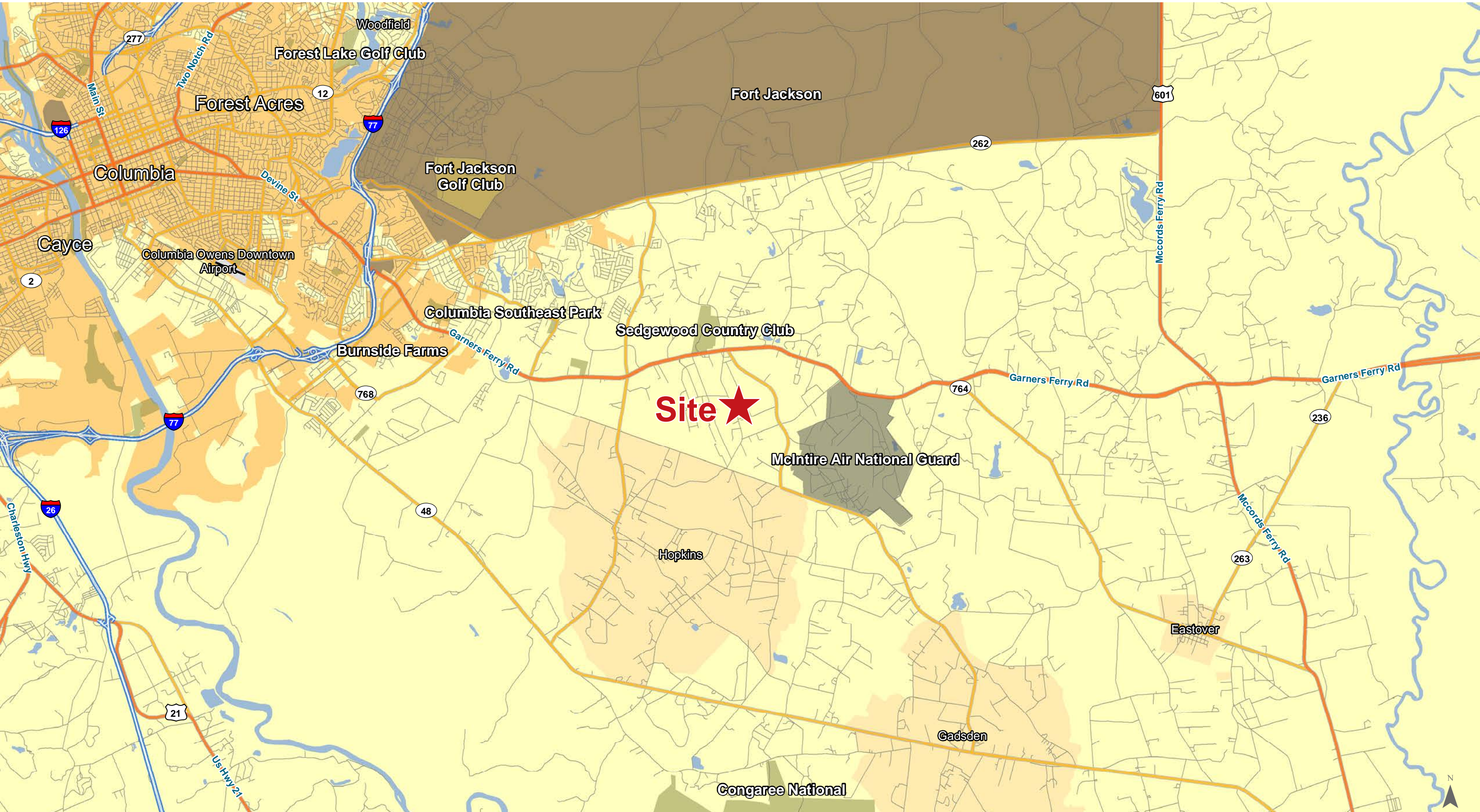
Tom Milliken

O: 803 744 9837 | C: 803 331 6999
 tmilliken@naicolumbia.com

Property Highlights

- Large Estate Size Lot 9.73 +/- Acres
- Accessible from Horrell Hill Rd. or Fox Meadow Ln.
- Property Currently in Pasture
- Perfect for Someone Looking to “Buy and Build”
- Favorable Topography
- Will Consider Subdividing into Two 5 +/- Acre Lots

OFFERING SUMMARY	
Sale Price	\$90,000
Lot Size	9.73 Acres



Map Updated: Tuesday, May 12, 2020. This information submitted is not guaranteed. Although obtained from reliable sources, all information should be confirmed prior to use or reliance upon the information. This document may not be reproduced in whole or in part without the express written consent of NAI Columbia.



Map Updated: Tuesday, May 12, 2020. This information submitted is not guaranteed. Although obtained from reliable sources, all information should be confirmed prior to use or reliance upon the information. This document may not be reproduced in whole or in part without the express written consent of NAI Columbia.





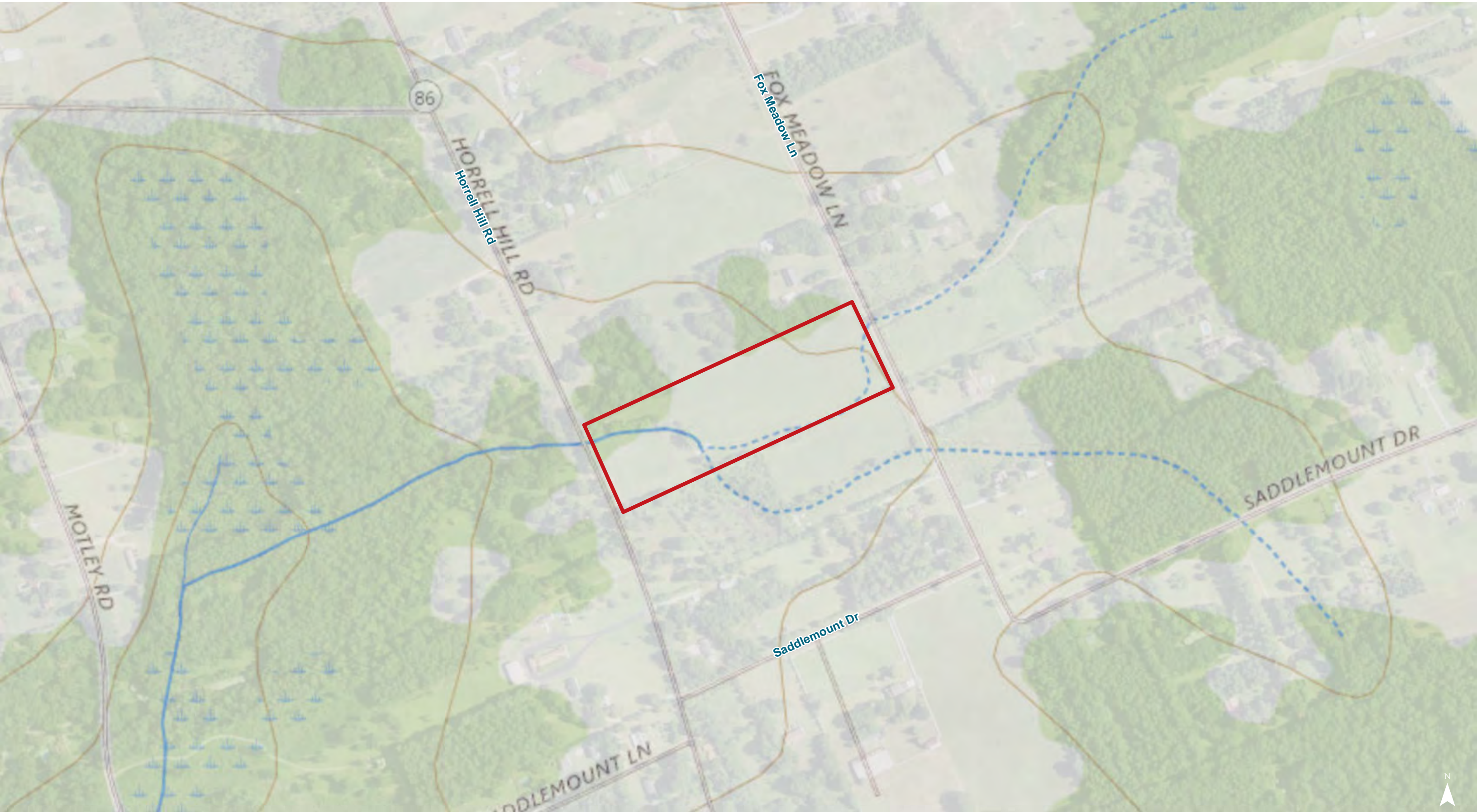
Map Updated: Tuesday, May 12, 2020. This information submitted is not guaranteed. Although obtained from reliable sources, all information should be confirmed prior to use or reliance upon the information. This document may not be reproduced in whole or in part without the express written consent of NAI Columbia.



Map Updated: Tuesday, May 12, 2020. This information submitted is not guaranteed. Although obtained from reliable sources, all information should be confirmed prior to use or reliance upon the information. This document may not be reproduced in whole or in part without the express written consent of NAI Columbia.

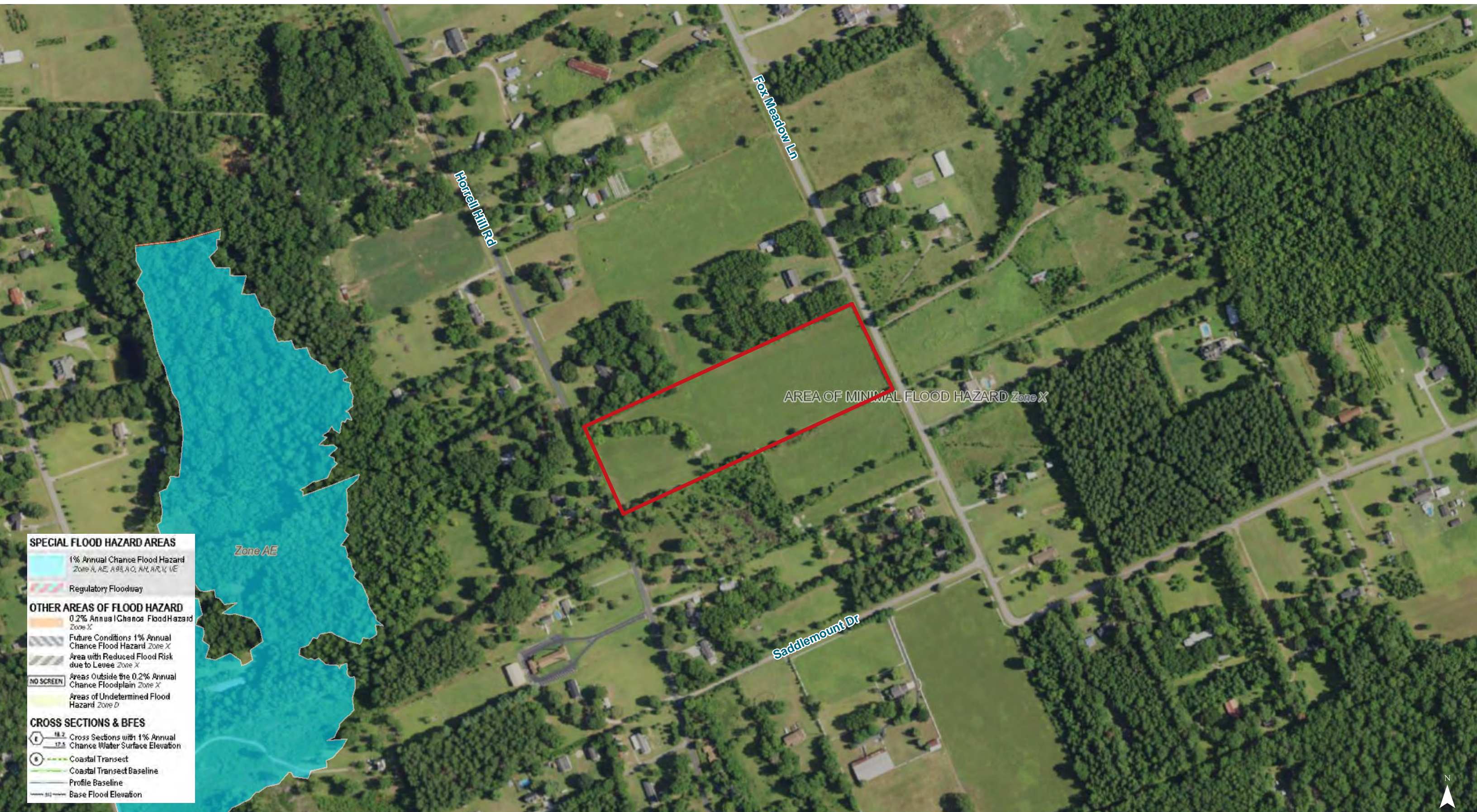


Map Updated: Tuesday, May 12, 2020. This information submitted is not guaranteed. Although obtained from reliable sources, all information should be confirmed prior to use or reliance upon the information. This document may not be reproduced in whole or in part without the express written consent of NAI Columbia.



Map Updated: Tuesday, May 12, 2020. This information submitted is not guaranteed. Although obtained from reliable sources, all information should be confirmed prior to use or reliance upon the information. This document may not be reproduced in whole or in part without the express written consent of NAI Columbia.





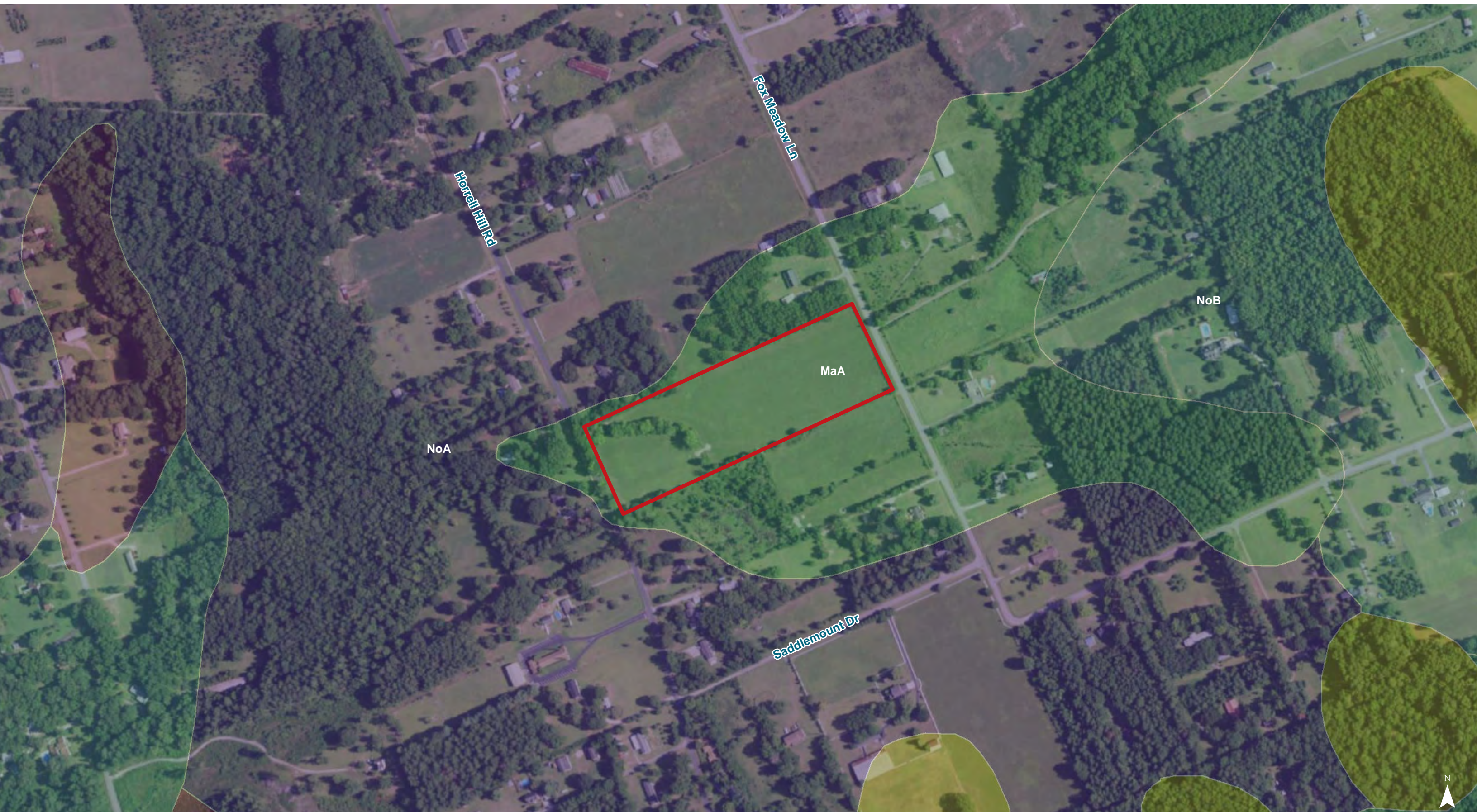
Map Updated: Tuesday, May 12, 2020. This information submitted is not guaranteed. Although obtained from reliable sources, all information should be confirmed prior to use or reliance upon the information. This document may not be reproduced in whole or in part without the express written consent of NAI Columbia.



National Wetlands Inventory

- Estuarine and Marine Deepwater
- Estuarine and Marine Wetland
- Freshwater Emergent Wetland
- Freshwater Forested/Shrub Wetland
- Freshwater Pond
- Lake
- Riverine

Map Updated: Tuesday, May 12, 2020. This information submitted is not guaranteed. Although obtained from reliable sources, all information should be confirmed prior to use or reliance upon the information. This document may not be reproduced in whole or in part without the express written consent of NAI Columbia.



Map Updated: Tuesday, May 12, 2020. This information submitted is not guaranteed. Although obtained from reliable sources, all information should be confirmed prior to use or reliance upon the information. This document may not be reproduced in whole or in part without the express written consent of NAI Columbia.

Map Unit Description (Brief, Generated)

Richland County, South Carolina

[Minor map unit components are excluded from this report]

Map unit: MaA - Marlboro sandy loam, 0 to 2 percent slopes

Component: Marlboro (100%)

The Marlboro component makes up 100 percent of the map unit. Slopes are 0 to 2 percent. This component is on marine terraces on coastal plains. The parent material consists of clayey marine deposits. Depth to a root restrictive layer is greater than 60 inches. The natural drainage class is well drained. Water movement in the most restrictive layer is moderately high. Available water to a depth of 60 inches is high. Shrink-swell potential is low. This soil is not flooded. It is not ponded. There is no zone of water saturation within a depth of 72 inches. Organic matter content in the surface horizon is about 1 percent. Nonirrigated land capability classification is 1. This soil does not meet hydric criteria.

Map unit: NoA - Norfolk loamy sand, 0 to 2 percent slopes

Component: Norfolk (90%)

The Norfolk component makes up 90 percent of the map unit. Slopes are 0 to 2 percent. This component is on marine terraces on coastal plains. The parent material consists of loamy marine deposits. Depth to a root restrictive layer is greater than 60 inches. The natural drainage class is well drained. Water movement in the most restrictive layer is moderately high. Available water to a depth of 60 inches is moderate. Shrink-swell potential is low. This soil is not flooded. It is not ponded. A seasonal zone of water saturation is at 48 inches during January, February, March. Organic matter content in the surface horizon is about 1 percent. Nonirrigated land capability classification is 1. This soil does not meet hydric criteria.

Map unit: NoB - Norfolk loamy sand, 2 to 6 percent slopes

Component: Norfolk (90%)

The Norfolk component makes up 90 percent of the map unit. Slopes are 2 to 6 percent. This component is on marine terraces on coastal plains. The parent material consists of loamy marine deposits. Depth to a root restrictive layer is greater than 60 inches. The natural drainage class is well drained. Water movement in the most restrictive layer is moderately high. Available water to a depth of 60 inches is moderate. Shrink-swell potential is low. This soil is not flooded. It is not ponded. A seasonal zone of water saturation is at 48 inches during January, February, March. Organic matter content in the surface horizon is about 1 percent. Nonirrigated land capability classification is 2e. This soil does not meet hydric criteria.